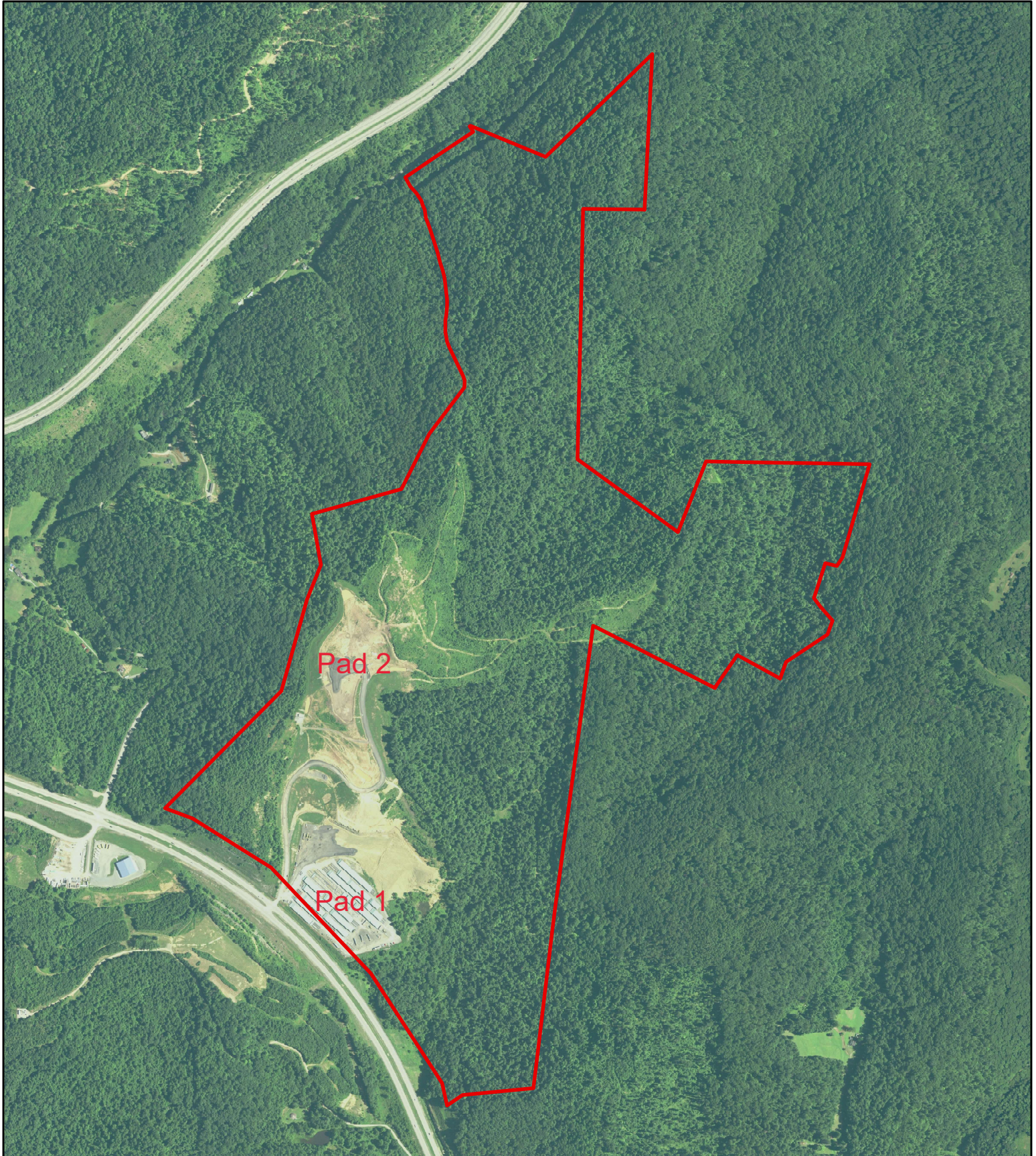



# Exhibit A: Waco Route 19 Morris Development Site



## Legend

 Parcel Boundary



0 0.1 0.2 Miles  


West Virginia GIS Technical Center. Imagery - Aerial 1m Orthophotos (2018 NAIP) Color and Color Infrared: Braxton County. Morgantown, WV: West Virginia GIS Technical Center, 2019.  
West Virginia GIS Technical Center. Tax Maps - Surface and Mineral Parcels: Braxton County. Morgantown, WV: West Virginia GIS Technical Center, 2019.